



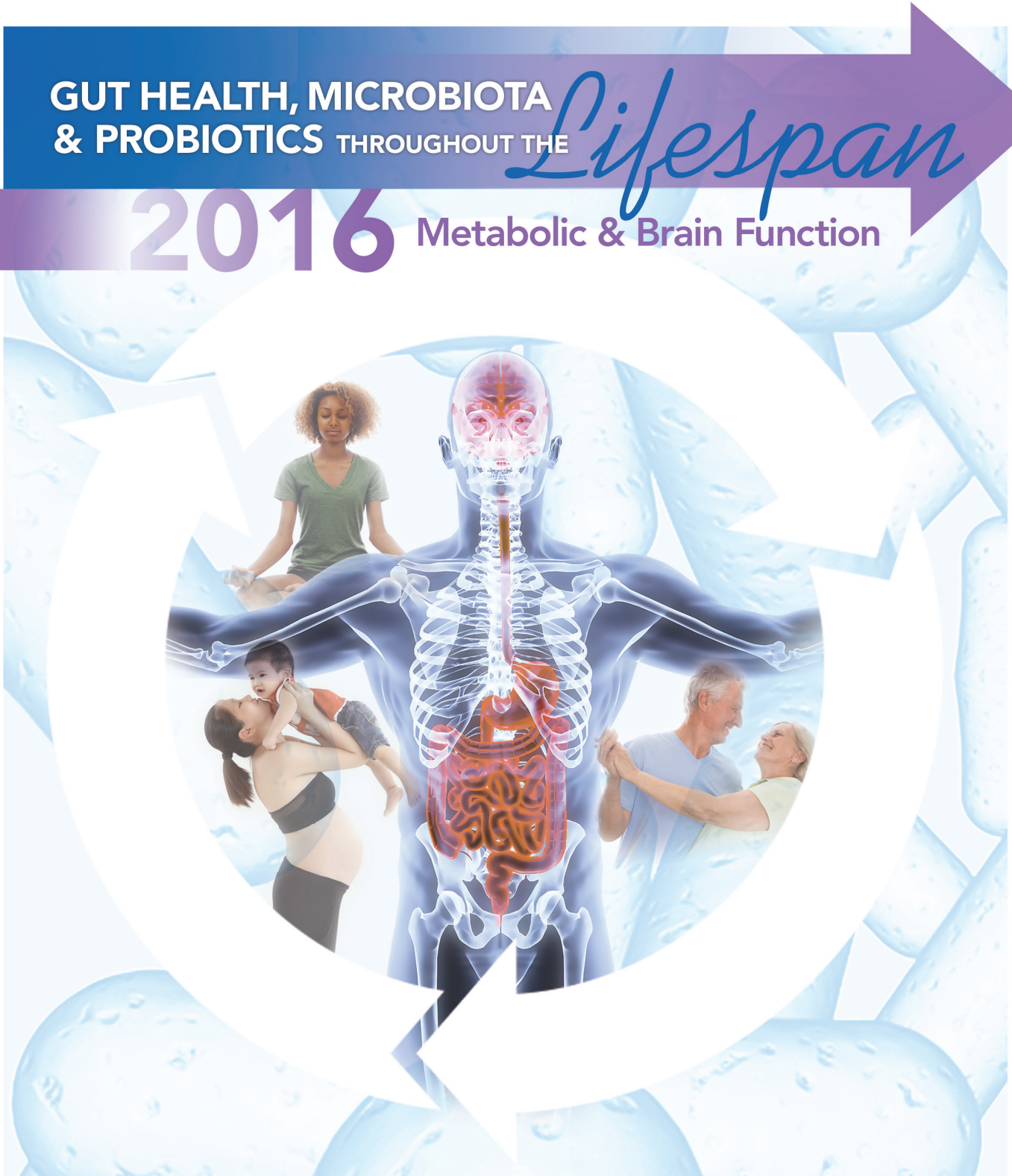
**HARVARD**  
 MEDICAL SCHOOL  
 DIVISION OF NUTRITION

**Symposium Program**

**GUT HEALTH, MICROBIOTA  
 & PROBIOTICS THROUGHOUT THE**

*Lifespan*

**2016** Metabolic & Brain Function



Unrestricted Educational Grants provided by:



## DAY 1 – Thursday, September 15, 2016

- 7:30 AM **Registration & Breakfast:** Ground Floor Lobby & First Floor Balcony
- 8:30 AM **Welcome & Introductions:** Amphitheater  
**W. Allan Walker, MD**, Conrad Taff Professor of Nutrition and Pediatrics; Director, Division of Nutrition, Harvard Medical School; Director, Mucosal Immunology Laboratory, Massachusetts General Hospital for Children, Boston, MA

### SESSION I: METABOLIC FUNCTION

**Moderator: Samuel Klein, MD**, William H. Danforth Professor of Medicine and Nutritional Science; Director, Center for Human Nutrition; Director, Center for Applied Research Sciences; Chief, Division of Geriatrics and Nutritional Science; Medical Director, Weight Management Program, Washington University School of Medicine, St. Louis, MO

- 8:45 AM **PREGNANCY: "Factors that Influence the Perinatal Microbiome"**  
**Kjersti Aagaard, MD, PhD**  
Associate Professor, Department of Obstetrics and Gynecology, Baylor College of Medicine, Houston, TX
- 9:10 AM **Discussion (15 minutes)**
- 9:25 AM **INFANT: "Manipulating the Infant Microbiome to Improve Metabolic Health"**  
**Josef Neu, MD**  
Professor of Pediatrics, Division of Neonatology, University of Florida, Gainesville, FL
- 9:50 AM **Discussion (15 minutes)**
- 10:05 AM **ADULTHOOD: "Influence of the Microbiome on Body Weight Regulation"**  
**Rob Knight, PhD**  
Professor Departments of Pediatrics and Computer Science & Engineering, University of California, San Diego, La Jolla, CA
- 10:30 AM **Discussion (15 minutes)**
- 10:45 AM **Break:** Ground Floor Lobby
- 11:15 AM **ADULTHOOD: "Dissecting the Role of the Gut Microbiome in Obesity and Type 2 Diabetes"**  
**C. Ronald Kahn, MD**  
Mary K. Iacocca Professor of Medicine, Harvard Medical School; Chief Academic Officer, Joslin Diabetes Center, Boston, MA
- 11:40 AM **Discussion (15 minutes)**
- 11:55 AM **ADULTHOOD: "Gut Microbiota and Chronic Inflammatory Diseases"**  
**Andrew Gewirtz, PhD**  
University Center Professor, Center for Inflammation, Immunity & Infection, Institute of Biomedical Sciences, Georgia State University, Atlanta, GA
- 12:20 PM **Discussion (15 minutes)**
- 12:35 PM **Lunch:** Ground Floor Lobby & Rotunda (3rd floor)
- 1:35 PM **ADULTHOOD: "Host Microbiome Interactions in Health and Disease"**  
**Eran Elinav, MD, PhD**  
Senior Scientist, Immunology Department, Incumbent of the Rina Gudinski Development Chair, Weizmann Institute of Science, Rehovot, Israel

- 2:00 PM Discussion (15 minutes)
- 2:15 PM **ADULTHOOD: "Effect of Diet on the Microbiome and Cardiometabolic Health"**  
**Karine Clément, MD, PhD**  
Professor of Nutrition, ICAN: Institute of Cardiometabolism and Nutrition/INSERM/Universté Pierre et Marie Curie, Paris, France
- 2:40 PM Discussion (15 minutes)
- 2:55 PM **Break:** Ground Floor Lobby
- 3:25 PM **ADULTHOOD: "Manipulating the Adult Gut Microbiome for Metabolic Health"**  
**Patrice D. Cani, PhD**  
Professor, Research Associate FRS-FNRS  
Louvain Drug Research Institute (LDRI), Metabolism and Nutrition, Walloon Excellence in Life sciences and BIOtechnology (WELBIO), Université catholique de Louvain (UCL), Brussels, Belgium
- 3:50 PM Discussion (15 minutes)
- 4:05 PM **OLDER ADULT: "The Microbiota of Older Adults: Clinical Perspectives on Health and Disease"**  
**Vincent J. Quagliarello, MD**  
Professor of Medicine, Clinical Chief, Infectious Disease, Yale University School of Medicine, New Haven, CT
- 4:30 PM Discussion (15 minutes)
- 4:45 PM **Outlook on Gut Health and Metabolic Function: Samuel Klein, MD**
- 5:00 PM **Closing Remarks: W. Allan Walker, MD**  
**Adjourn Symposium**
- 5:00 PM **Reception/Poster Session:** Ground Floor Lobby & First Floor Balcony
- 6:30 PM **Adjourn**

## DAY 2 – Friday, September 16, 2016

- 7:30 AM **Registration & Breakfast:** Ground Floor Lobby & First Floor Balcony
- 8:30 AM **Welcome & Introductions:** Amphitheater  
**W. Allan Walker, MD**

### SESSION II: BRAIN FUNCTION

**Moderator: Emeran A. Mayer, MD**, Professor, Department of Medicine, Physiology and Psychiatry, David Geffen School of Medicine, Executive Director, Oppenheimer Family Center for Neurobiology of Stress, Co-Director, CURE: Digestive Diseases Research Center University of California, Los Angeles, Los Angeles, CA

- 8:45 AM **PREGNANCY: "Transmission of Maternal Stress Signals in Neurodevelopment via the Microbiome"**  
**Tracy Bale, MD**  
Professor of Neuroscience, School of Veterinary Medicine, Department of Psychiatry, Perelman School of Medicine, University of Pennsylvania, Philadelphia, PA

- 9:10 AM Discussion (15 minutes)
- 9:25 AM **INFANT PERIOD: "Does Obstetric Mode of Delivery Alter Brain Function?"**  
**Ted Dinan, PhD**  
Professor and Department Head, Psychiatry, University of College Cork, Cork, Ireland
- 9:50 AM Discussion (15 minutes)
- 10:05 AM **ADULTHOOD: "Indigenous Bacterial Species from the Gut Microbiota Regulate Host Serotonin Biosynthesis"**  
**Elaine Hsiao, PhD**  
Assistant Professor, Department of Integrative Biology and Physiology, Department of Medicine, University of California, Los Angeles, Los Angeles, CA
- 10:30 AM Discussion (15 minutes)
- 10:45 AM **Break:** Ground Floor Lobby
- 11:15 AM **ADULTHOOD: "Gut Microbiota Brain Interactions in IBS"**  
**Kirsten Tillisch, MD**  
Associate Professor, University of California, Los Angeles, Los Angeles, CA
- 11:40 AM Discussion (15 minutes)
- 11:55 AM **OLDER ADULT: "Gut Microbiota Related to Parkinson's Disease"**  
**Filip Scheperjans, MD, PhD**  
Neurologist, Helsinki University Hospital, Helsinki, Finland
- 12:20 PM Discussion (15 minutes)
- 12:35 PM **Outlook on Gut Health and Brain Function:** Emeran A. Mayer, MD
- 12:50 PM **Closing Remarks:** W. Allan Walker, MD
- 1:00 PM **Adjourn**

## ORGANIZING COMMITTEE

### Allan Walker, MD – Chair

Director, Division of Nutrition, Harvard Medical School

### Sam Klein, MD – Co-chair

Professor of Medicine and Nutritional Science, Washington University School of Medicine

### Emeran Mayer, MD – Co-chair

Professor, Department of Medicine, Physiology and Psychiatry, David Geffen School of Medicine, University of California, Los Angeles

### Richard Guerrant, MD

Professor of International Medicine, University of Virginia School of Medicine

### Mary Ellen Sanders, PhD

Dairy and Food Culture Technologies

### Balfour Sartor, MD

Professor of Medicine, Microbiology and Immunology, University of North Carolina